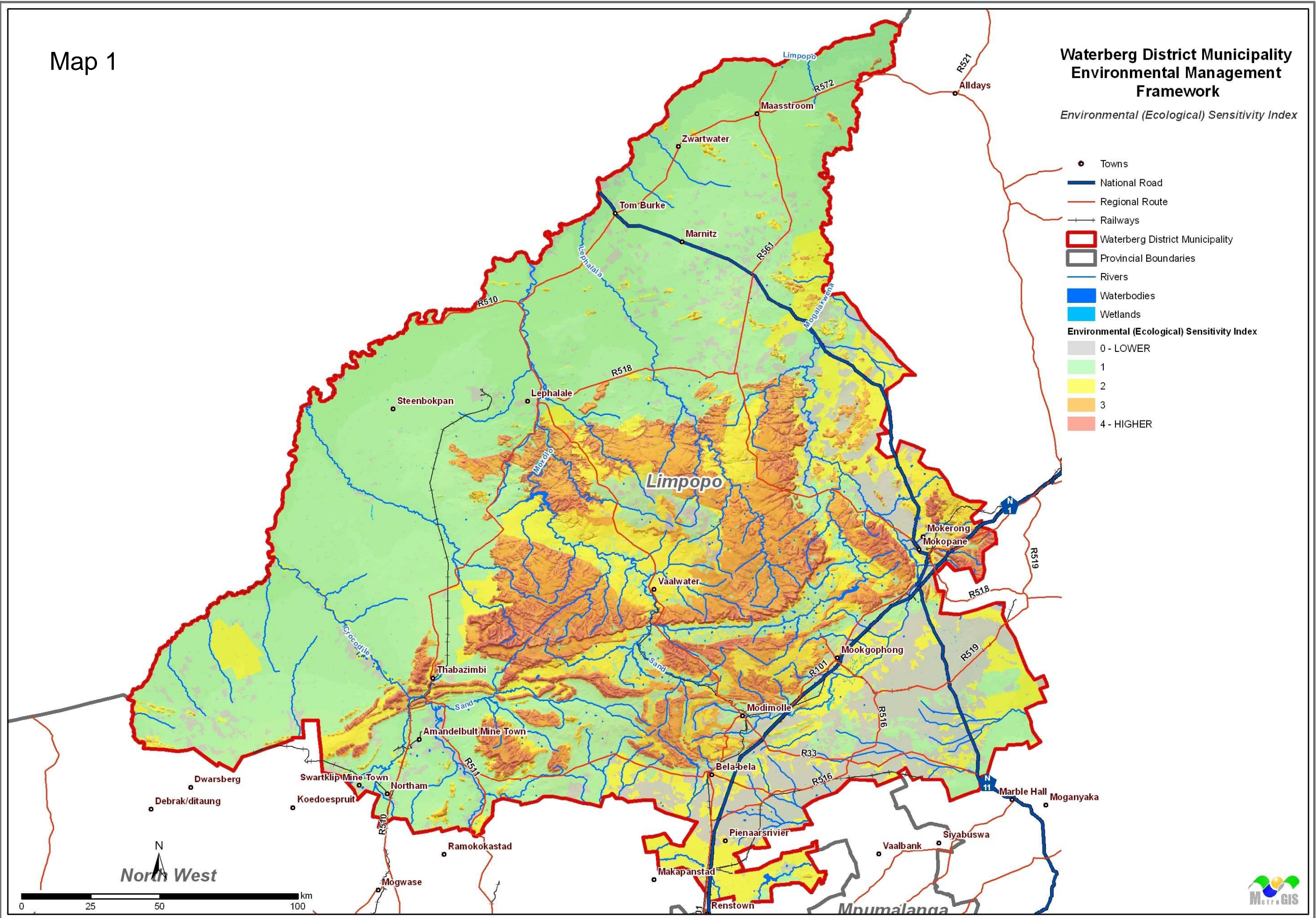


Map 1

Waterberg District Municipality Environmental Management Framework

Environmental (Ecological) Sensitivity Index

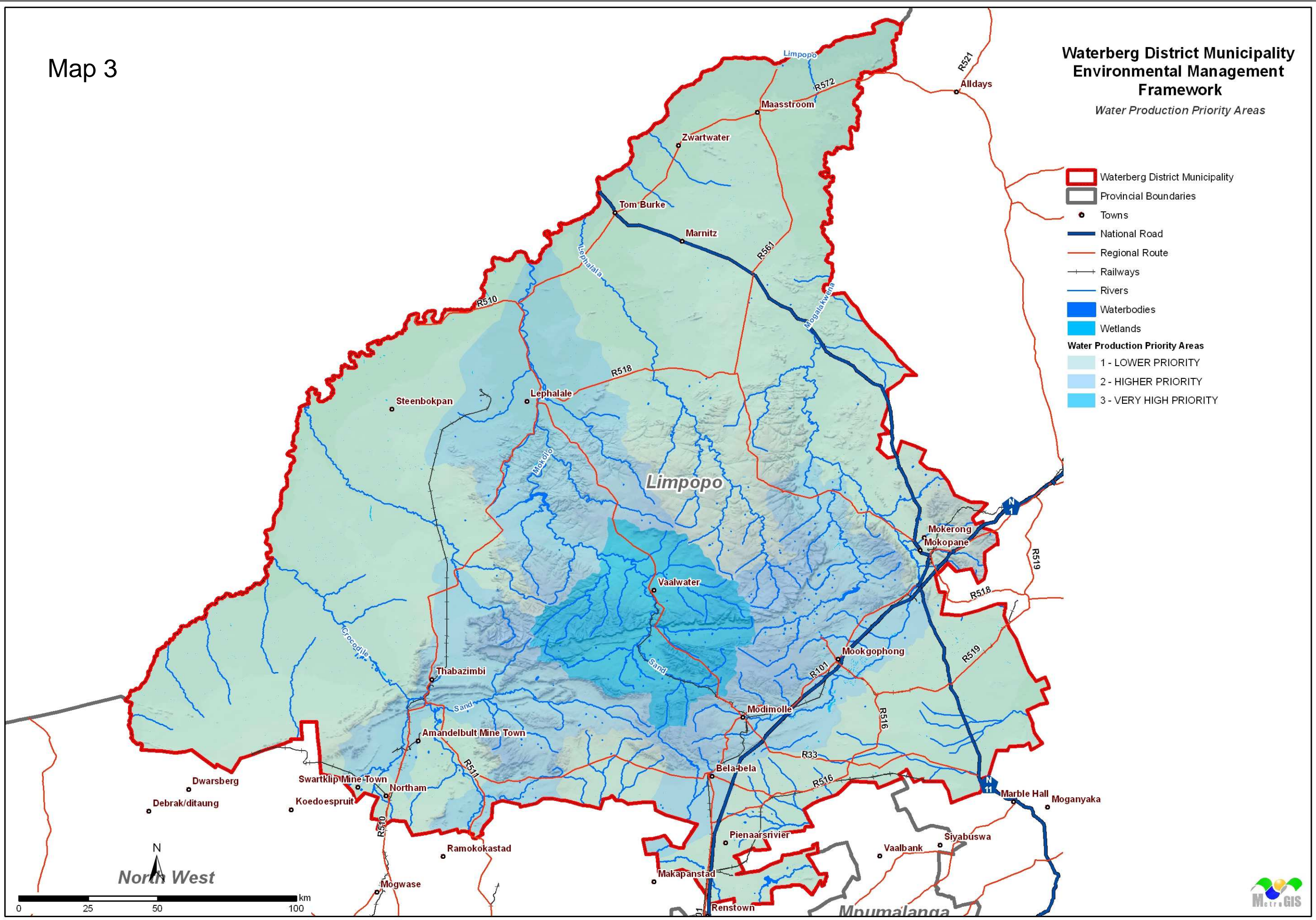
- Towns
- National Road
- Regional Route
- Railways
- ▭ Waterberg District Municipality
- ▭ Provincial Boundaries
- Rivers
- Waterbodies
- Wetlands
- Environmental (Ecological) Sensitivity Index**
- 0 - LOWER
- 1
- 2
- 3
- 4 - HIGHER



Map 3

Waterberg District Municipality Environmental Management Framework

Water Production Priority Areas

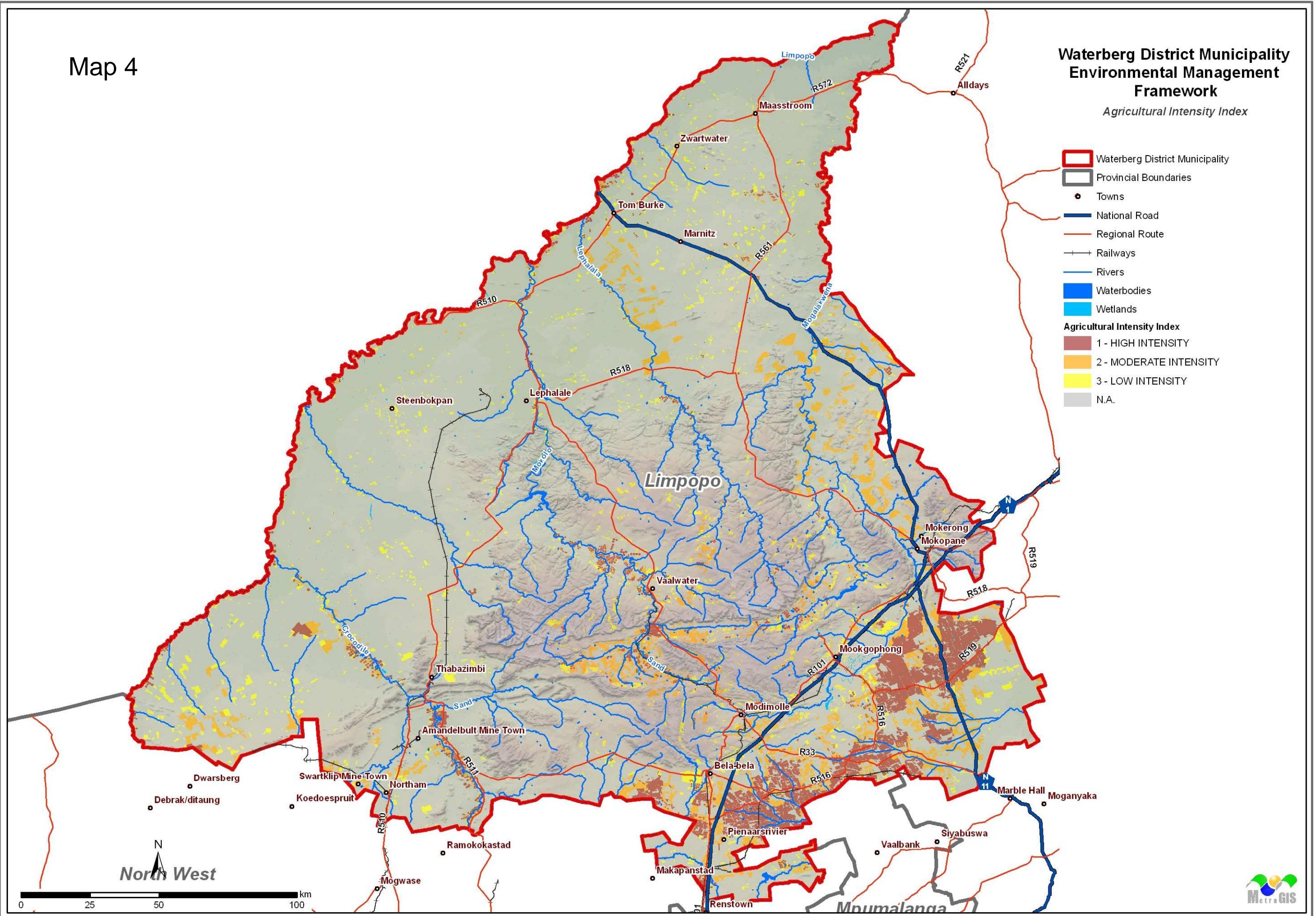


Map 4

Waterberg District Municipality Environmental Management Framework

Agricultural Intensity Index

-  Waterberg District Municipality
-  Provincial Boundaries
-  Towns
-  National Road
-  Regional Route
-  Railways
-  Rivers
-  Waterbodies
-  Wetlands
- Agricultural Intensity Index**
-  1 - HIGH INTENSITY
-  2 - MODERATE INTENSITY
-  3 - LOW INTENSITY
-  N.A.



Map 5

Waterberg District Municipality Environmental Management Framework

Environmental Management Zones

- Waterberg District Municipality
 - Provincial Boundaries
 - Towns
 - National Road
 - Regional Route
 - Railways
 - Rivers
 - Waterbodies
 - Wetlands
- Environmental Management Zones**
- Zone 1: Conservation for research and protection focus areas with limited tourism
 - Zone 2: Tourism focus areas within a conservation setting
 - Zone 3: Game farming areas with conservation tourism focus
 - Zone 4: Game and cattle farming (including hunting) areas with commercial focus
 - Zone 5: Mining and industrial development focus areas
 - Zone 6: Restricted mining focus areas in aesthetic and/or ecological resource areas
 - Zone 7: Urbanisation focus areas and nodes
 - Zone 8: Rural settlement areas
 - Zone 9: Agriculture focus areas with a tourism component
 - Zone 10: Agriculture areas with commercial focus
 - Zone 11: Major infrastructure corridors

